

YACHT

SANLORENZO

SX

112/

SX
112/



SX
112/



SX
112/



SX
112/

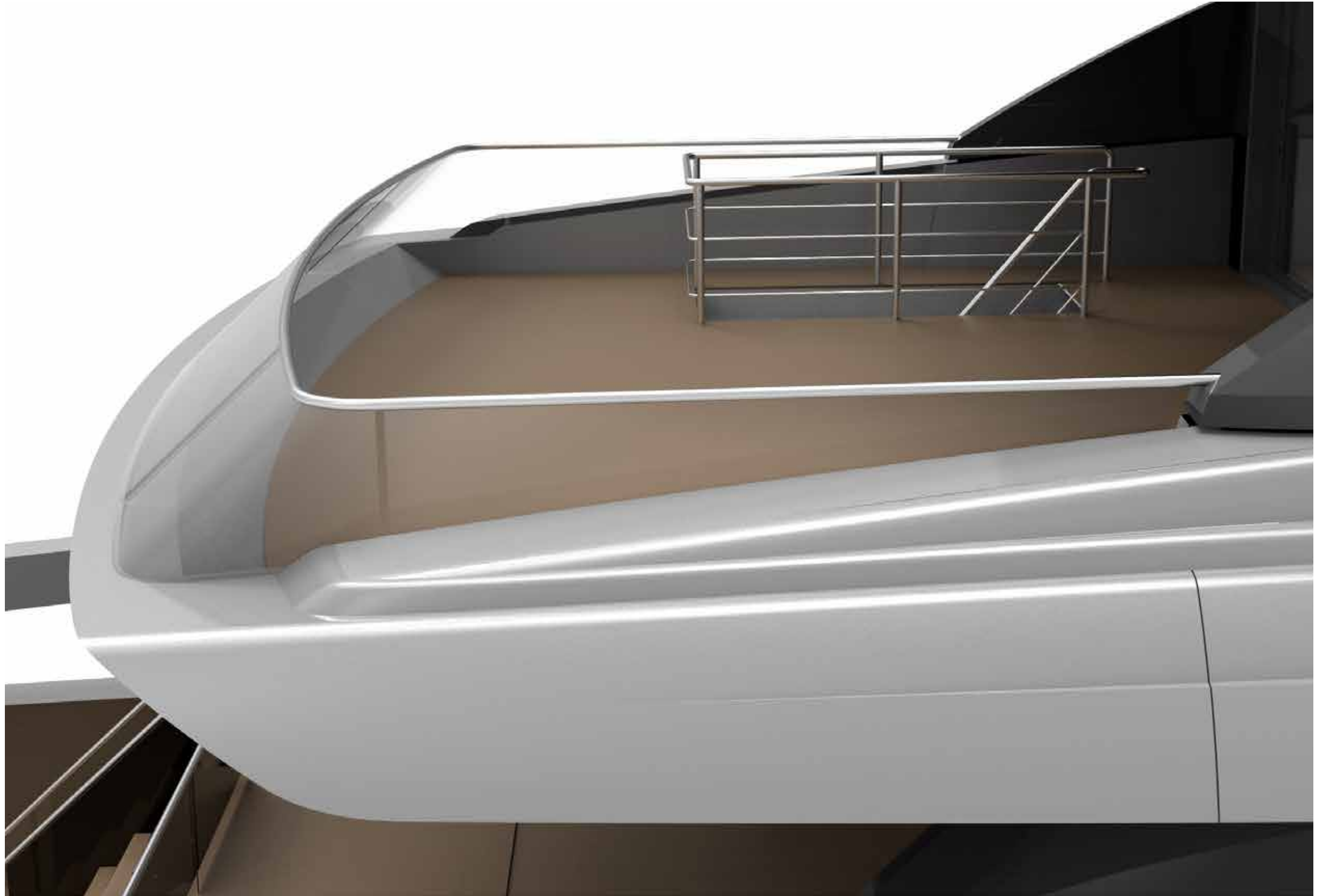


SX
112/









SX
112/



SX
112/











SX
112/



SX
112/



SX
112/



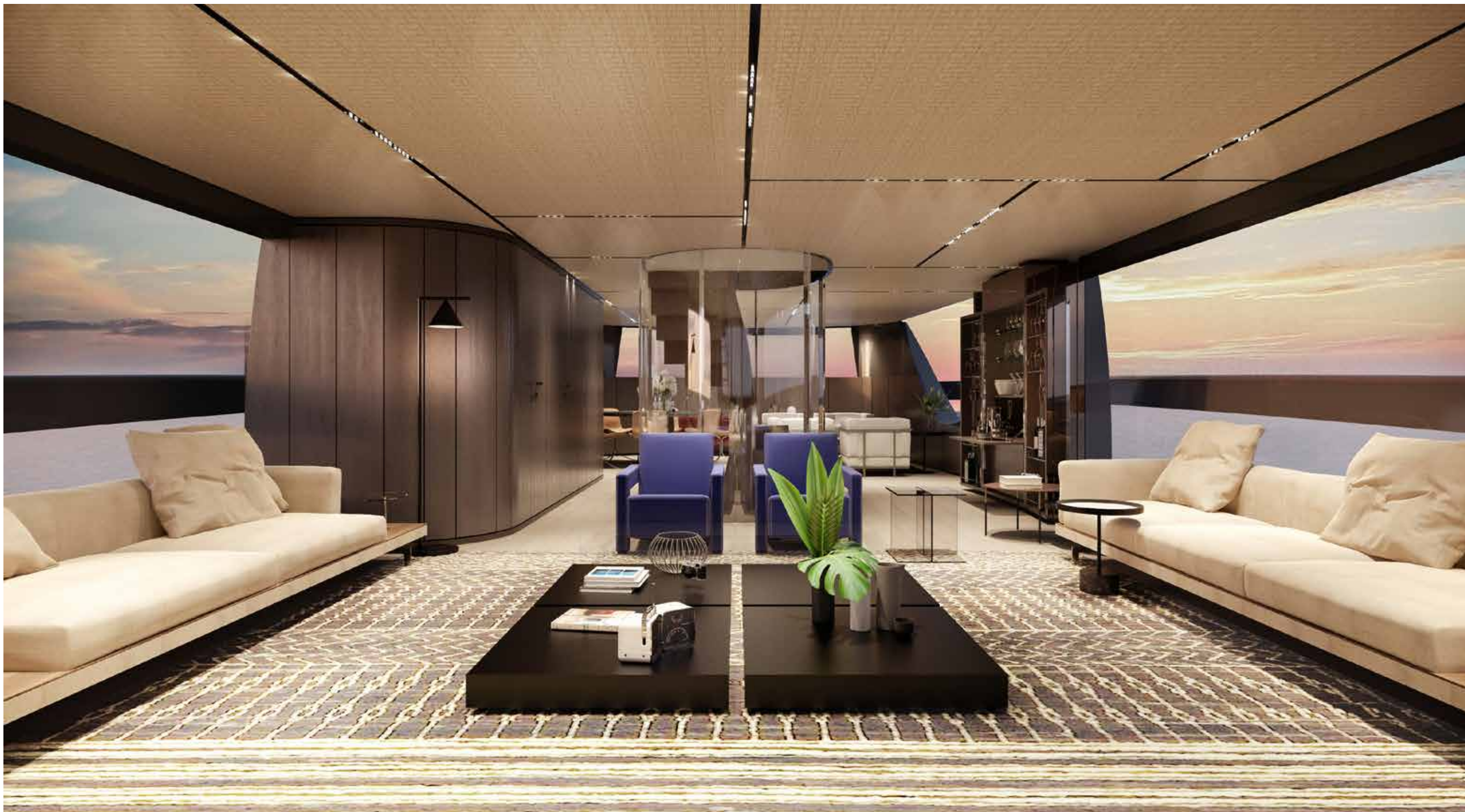
SX
112/



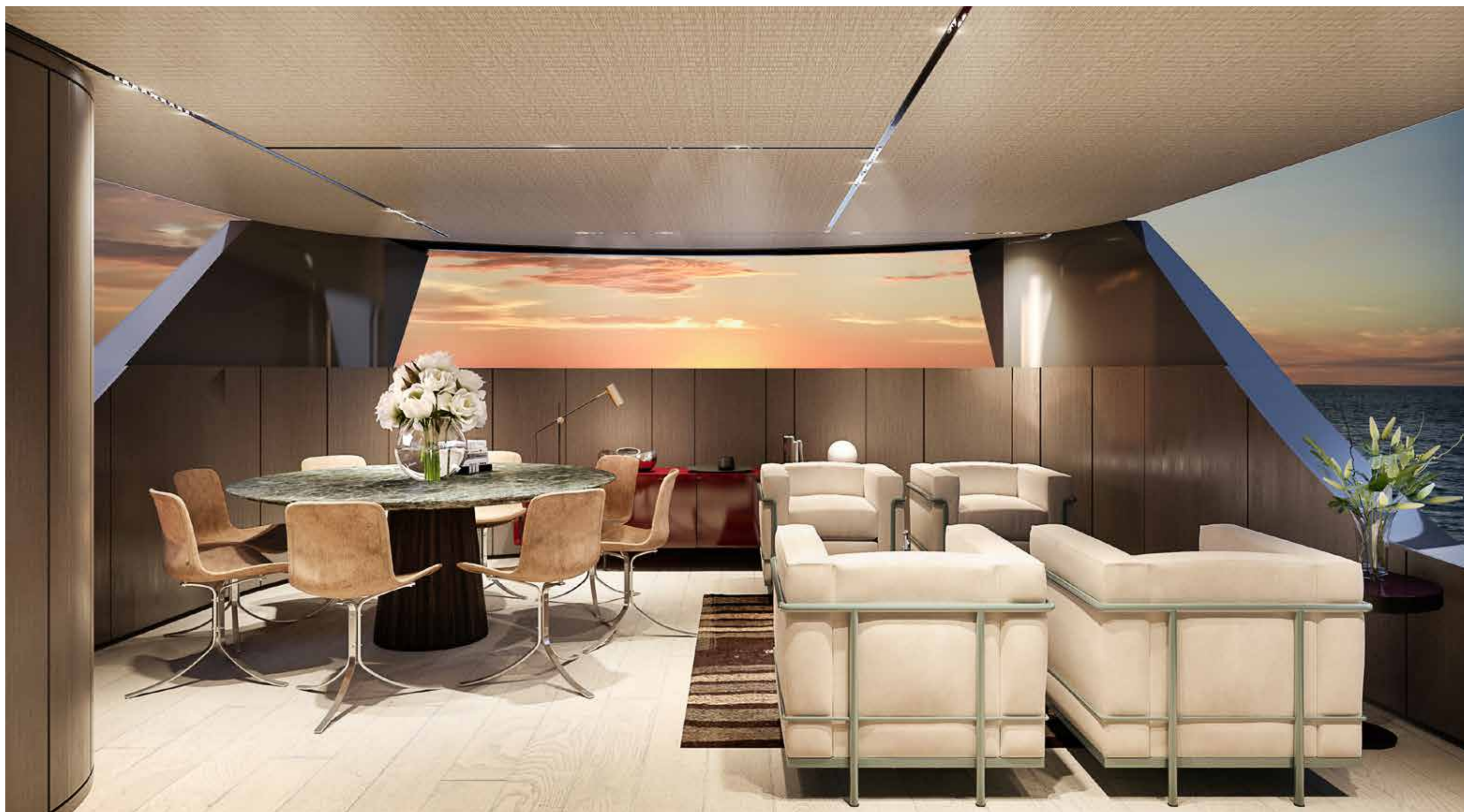








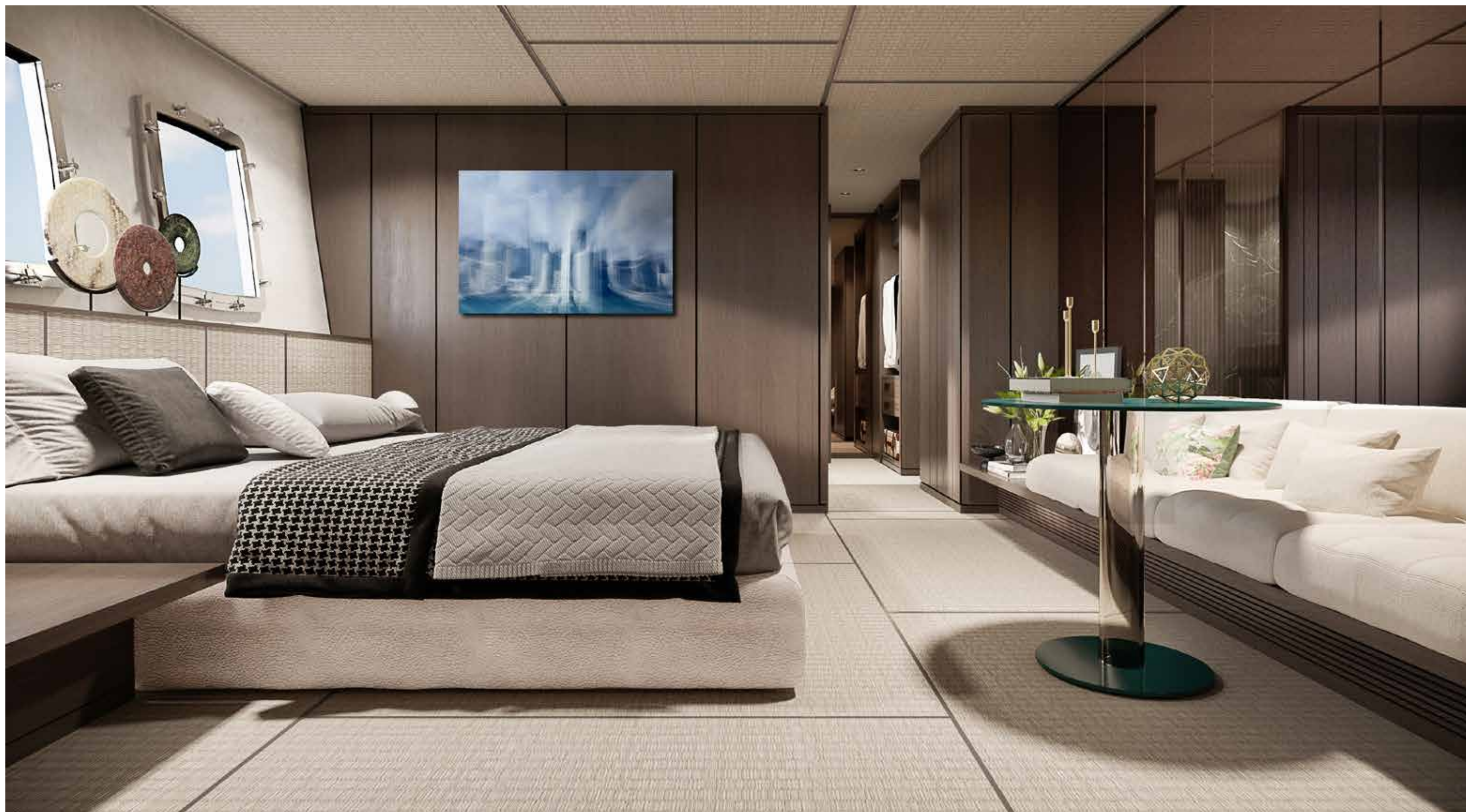




















CONCEPT 1
Open Space

CONCEPT 2
Open Space

CONCEPT 3
Upper Deck Owner's Cabin

CONCEPT 4
Upper Deck Owner's Cabin

FLY



same as **Concept 1**

same as **Concept 1**

same as **Concept 1**

MAIN
DECK



same as **Concept 1**



LOWER
DECK

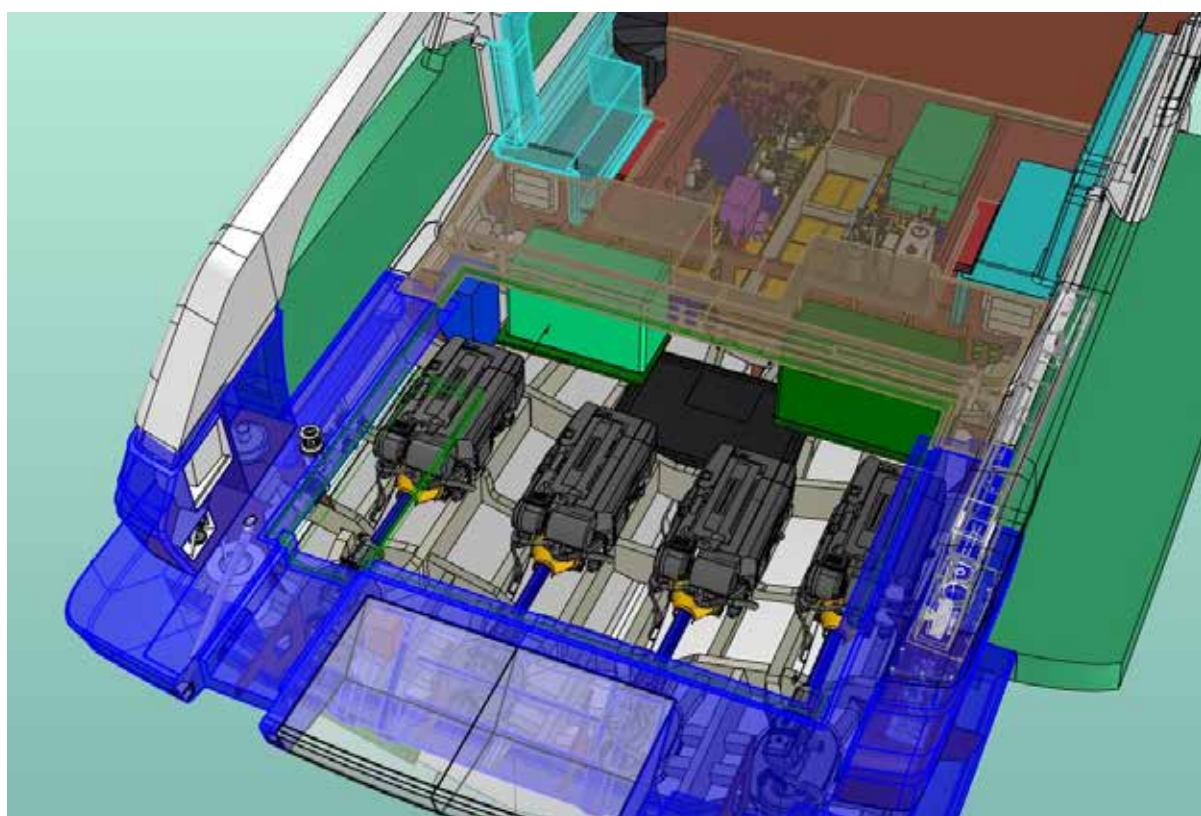
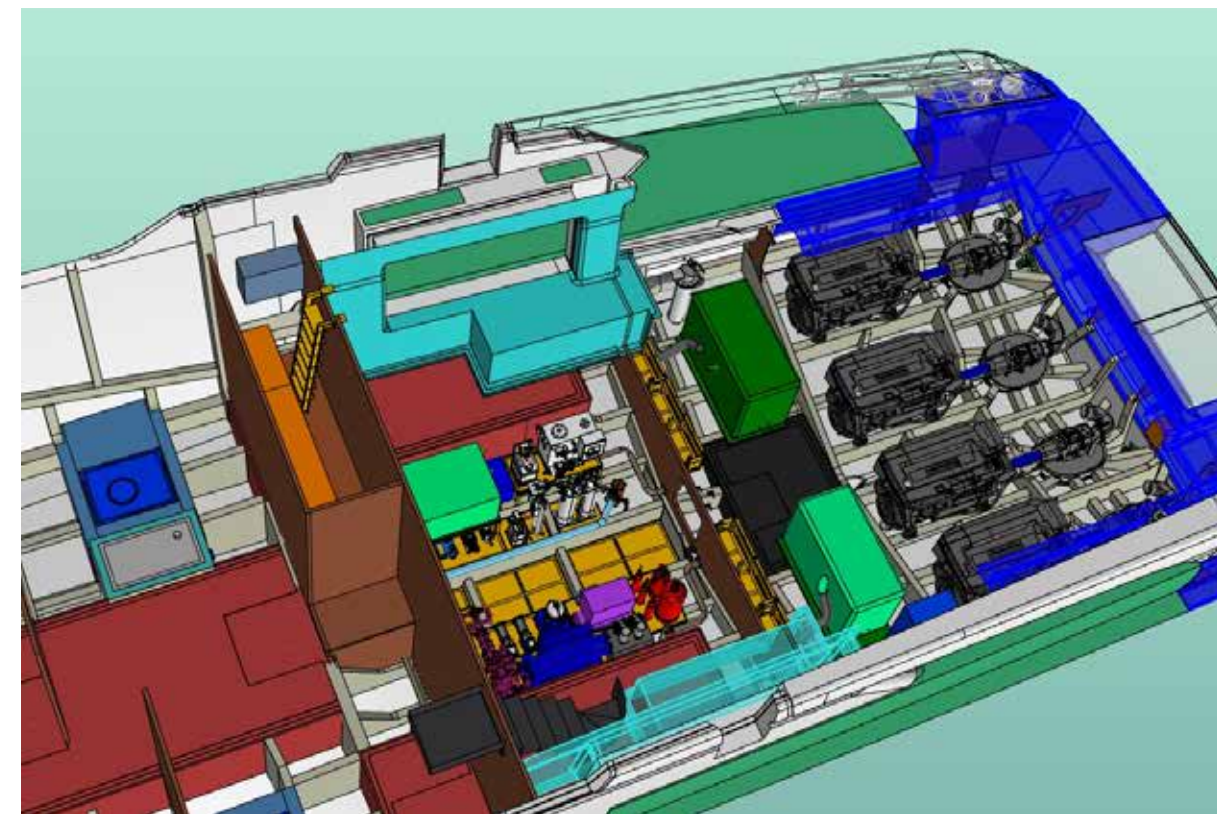
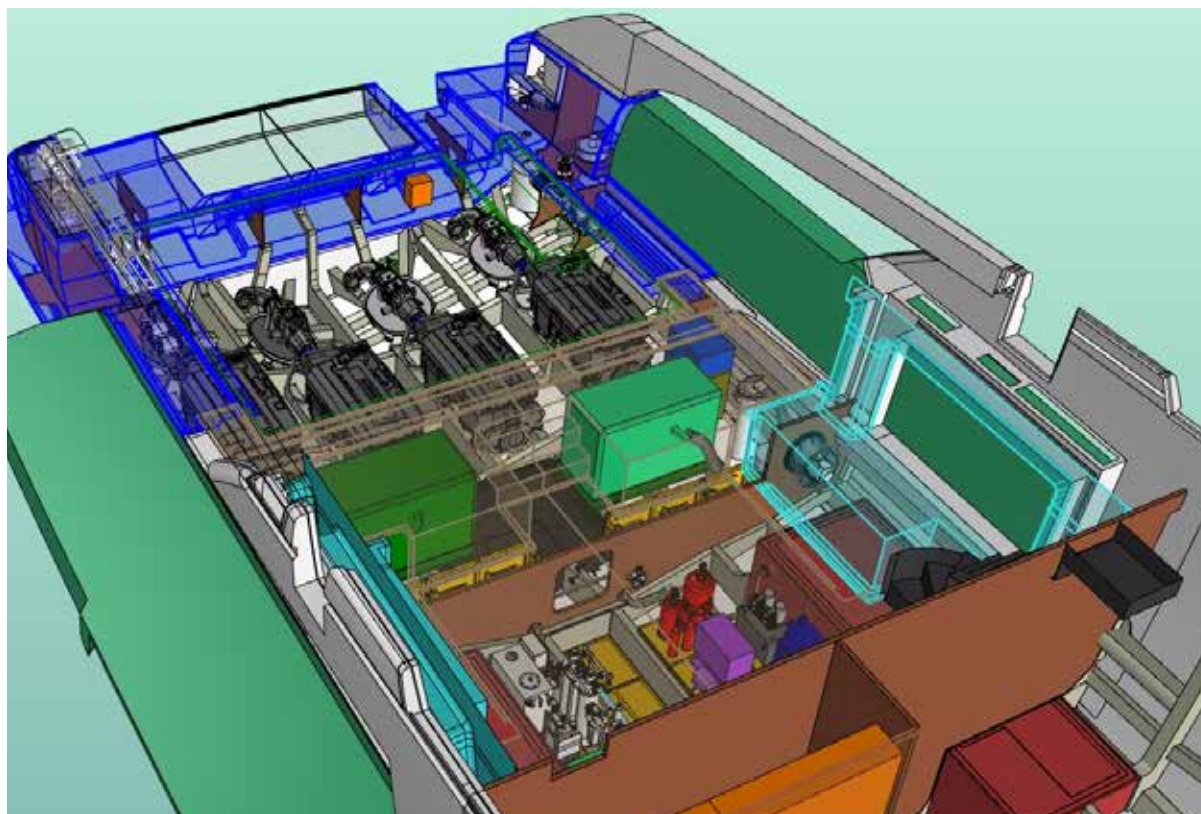


same as **Concept 2**

same as **Concept 2**

- | | |
|-----------------|--------------|
| Zone Comuni | Scale |
| Zona notte | Cucina |
| Zona Equipaggio | Passavivande |









SX
112/



Length overall	34,16 m
Maximum beam	8,00 m
Construction height	4,30 m
Displacement @ half load (*)	138 t
Displacement @ full load (*)	149 t
Waterline length @ half load	31,06 m
Waterline length @ full load	31,14m
Draught @ half load	1,88 m
Draught @ full load	1,94 m
Guest accommodation	10 people
Crew accommodation	5 people
Engine	4 x IPS3 1350S Volvo D13B – 1000 Hp
Consumption (approx) (**)	550 l/h 2200 rpm
Power output @ 100% MCR (**)	1940 kW @ 2400 rpm
Gearbox	4 x IPS
Transmission	4 x IPS
Propeller	Volvo IPS propellers
Shafts	4 x IPS
Gensets	1 x 55 kW + 1 x 70 kW
Rudders	N/A
Maximum speed (approx) (***)	23 kn
Cruising speed (approx) (***)	20 kn
Economical speed (approx) (***)	10 kn
Max range @ economical speed (approx.)	1600 nm
Deadrise	15°
A/C power	240000 btu/h
Fuel capacity	18800 l
Fresh water capacity	2200 l
Black water capacity	850 l
Grey water capacity	950 l
Tender length	Max 6,25 m
Tender weight	Max 1600 kg

* Displacement data refers to a yacht with standard layout as described in the sales specification
** Speed data refer to a yacht with standard layout as described in the sales specification, considering a third of liquid weight, a third of luggage weight (25kg per bed) and 5 crew members (80kg each), and without stabilization system and hard-top

It's not an investment if it's destroying the planet



INFUSION
LAYUP SYSTEM



BIO RESIN
&CORE



FSC CERTIFIED
WOOD SUPPLY



FORMALDEHYDE
FREE FURNITURE



LED
LIGHTING



BIOCHROME®



SUSTAINABLE
LEATHER



CLASS
A++



SOLAR
PANELS



HULL
EFFICIENCY



THERMAL
INSULATION

This brochure shall not be regarded as a contractual offer regarding the sale of yachts from the shipyard to individuals or companies. All the information contained in this brochure, including without limitation any technical or performance data, pictures, and drawings, are mere indications with no contractual value.

This document is based on the information available at the time it is published. In spite of the commitment aimed at guaranteeing maximum possible accuracy, the information contained herein may not cover all the details and any technical-commercial modifications introduced after printing, or may describe features that are not present.