



**SUNREEF 70 SAIL  
ROLEENO**





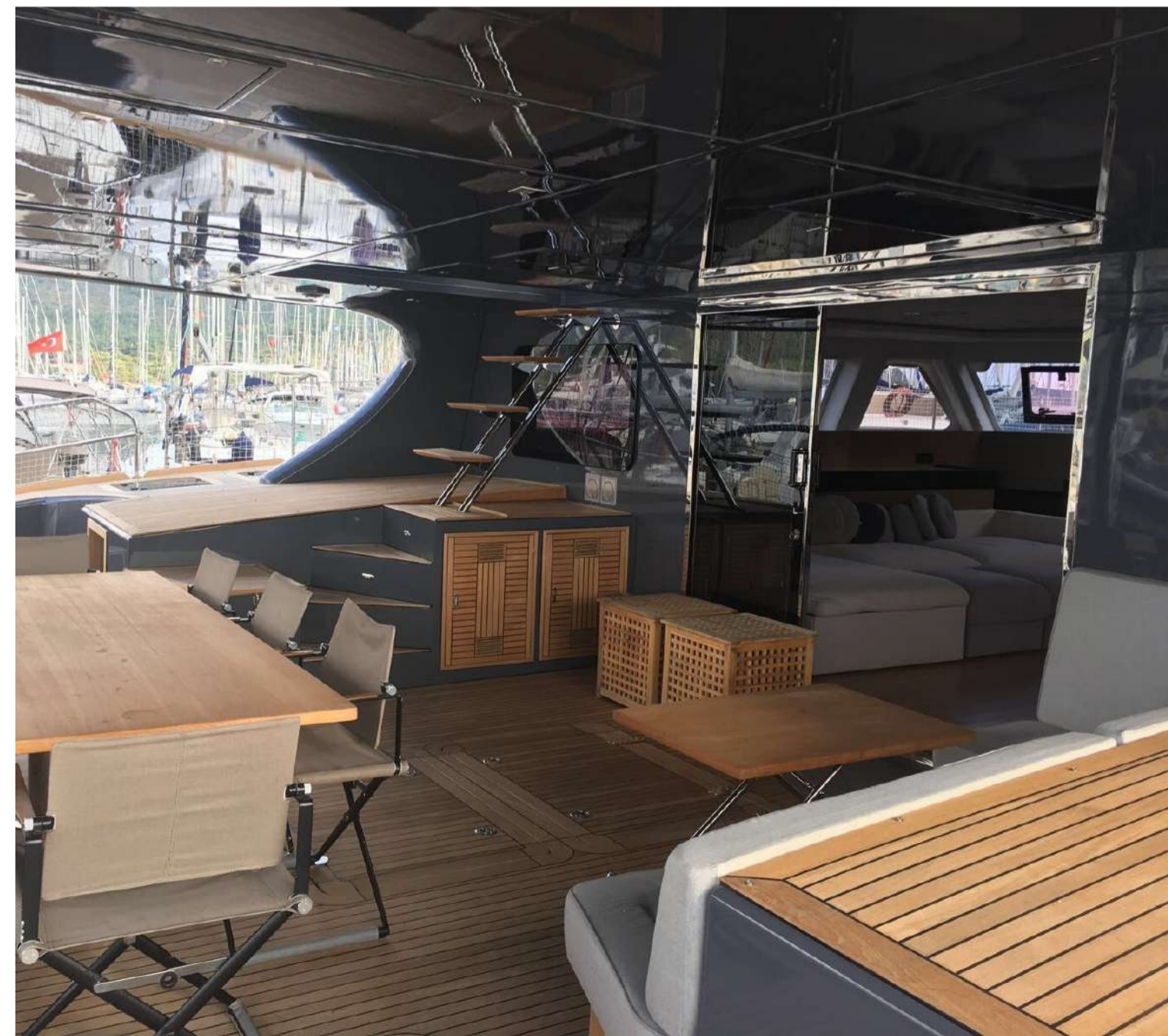


## SUNREEF 70 ROLEENO

Sunreef 70 Sail ROLEENO is considered to be one of the most iconic catamarans made by Sunreef Yachts.

Its luxurious interiors and spacious exteriors make this yacht perfect for any destination.

Roleeno was built under the supervision of SwellYachting management. This Sunreef 70 Sail was fully refit and upgraded recently.





A large sailing ship is docked at a pier. The ship's hull is dark, and several white cylindrical buoys are visible along the side. The masts and rigging are prominent against a blue sky with scattered white clouds. The text "TECHNICAL DATA" is overlaid in a bold, black, sans-serif font across the center of the image.

# TECHNICAL DATA

---

## GENERAL SPECIFICATION

**Length overall: 21,80 m 71,5'**

**Waterline length: 20,90 m 68,5'**

**Breadth overall: 10,10 m 33,1'**

**Lightship displacement: 31 T 69 440**

**Draft minimum: 1,90 m 6,2'**

**Mast length: 31.5 m 103.3'-**

**Fully battened main sail: 155 m<sup>2</sup> 1 668 ft<sup>2</sup>**

**Genoa: 95 m<sup>2</sup> 1 023 ft<sup>2</sup>**

**Solent: 50 m<sup>2</sup> 538 ft<sup>2</sup>**

**Main engines: 2 x 240 HP 2 x 240 HP**

**Fuel capacity: 2 x 3000 L 2 x 800 Gal**

**Water capacity: 2 x 800 L 2 x 213 Gal**

---

## CONSTRUCTION

•Hulls, deck, flybridge and all structural bulkheads constructed of glass/vynilester sandwich laminate with carbon reinforcement by infusion process

•Rudders constructed of a moulded glass/vynilester

•Rudder stocks are in aluminium alloy

•Extended re-enforced longitudinal beam

•Catwalk fitted on the forward beam

•Aft platform MECHANICS

•Stainless steel shafts

•2 three-bladed folding propellers STW/Brotons

•2 Engine speed controls (one at the navigation table and one on the flybridge) Type B

•1 electric pump + 1 manual for fuel tanks

•Lights in the engine rooms •2 complete engines 240 HP (Yanmar)

•2 electric bow thrusters (Side Power)

•Extension of the fuel tanks to 2 x 3000 L

---

## **RIGGING & SAILS**

- Carbon mast with incorporated LEDs (27 m)
- Carbon boom
- Plastic protections on the shroud
- Lazy jack
- Fully battened main sail made of Dacron 1st choice, cross cut, 2 reefs
- Genoa double pleated made of Dacron 1stchoice
- Mast steps up to boom
- Solent 1stchoice double pleated Dacron
- Complete gear for solen

---

## **MECHANICS**

- Stainless steel shafts
- 2 three-bladed folding propellers STW/Brotens
- 2 Engine speed controls (one at the navigation table and one on the flybridge) Type B
- 1 electric pump+ 1 manual for fuel tanks
- Lights in the engine rooms
- 2 complete engines 240 HP (Yanmar)
- 2 electric bow thrusters (Side Power)
- Extension of the fuel tanks to 2 x 3000 L

---

## DECK GEAR

- Bow pulpits with integrated teak seats
- Lewmar port lights
- 1 swim ladder on the skirts
- Winches
- Blocks and jammers
- Genoa manual furler
- Deck light
- Electric lifting system for the dinghy with extendable arms and remote controller
- Hatch at the top of the stairway between cockpit and flybridge
- 2 outputs freshwater (mast + cockpit)
- Main sail electric winch (Harken)
- 2 primary electric winches (Harken)
- Bimini on the flybridge (stainless steel)
- Hydraulic gangway-3 parts (Opacmare)
- 8 extra waterproof speakers (Bose)
- Stain steel gas BBQ
- 2 aft capstans for mooring
- Exterior lighting: Rotating deck search-light, 2 additional lights for the flybridge with separate switch, LEDs in skirts' stairs, cockpit and flybridge



---

## **ELECTRICAL SYSTEMS**

- AC-230V: Main panel extension, 2 chargers (Victron TG 24V/100A), Inverter (Victron Phoenix24V/5000A), two 230V sockets in cabins (Vimar), additional sockets in saloon and galley
- DC-24V: Main panel extension, Battery monitoring, 12 house batteries (Oddysay PC1800FT24V/1200Ah), starting batteries (PC2150)
- 2 alternators 24V/70A (Victron Balmar)
- Generator 27kVA 230 Volts, 50 Hertz (Cummins Onan)
- Additional 7kVA generator (Cummins Onan)

---

## **LIGHTS**

- Navylec system for lights, controls and D/C system, including lights for ceiling lights
- Interior lighting with LED lamps
- Navigation lights with LED lamps
- 8 underwater LED lights

---

## **STEERING SYSTEM**

- Rudders constructed of a moulded sandwich lamination glass/vynilester
- Self-aligning lower and top bearings
- Carbon steering wheel
- Hydraulic steering system
- 2 emergency tillers

---

## NAVIGATION & ELECTRONICS

- Compass(size 135mm)
- Chronometer and barometer
- Electronic pack: E-series, 9" display in saloon nav. Station and multifunctional 12,1" display with buildin GPS, radar 4kW 24" HD, autopilot with gyrocompass and 2 pilot control heads, 4 universal displays for speed, depth and wind display, VHF with DSC function (dual station), AIS transceiver
- Navtex (Furuno)
- Portable VHF (Raymarine)
- Fog horn

---

## PLUMBING

- Fresh water: 2 x 800 l equipped with level indicators, 2 pressurized pumps, 2 water heaters of 80 L
- Black water: 2 x 137 L each tanks with discharge system, 2 electric pumps with automatic discharge equipped with 3 way valves(discharge in the sea or holding tanks)
- 4 electrical bilge pumps
- 2 manual bilge pumps
- 2 hand showers on deck
- Watermaker 220 L/h-220V (Sea Recovery)
- 2 x 170 L grey water tanks with electric pumps of additional extraction and piping installation
- Electric toilets 24V in bathrooms with fresh water flush(silence version)

---

## **SAFETY EQUIPMENT**

- Automatic fire extinguishing system in the engine rooms
- Complete safety equipment pack: 2 life rafts for 8 people, Rescue equipment(16 lifejackets, first aidkit, flares, lifebuoy, signalling mirror, wooden plugs, flag set, fog horn)
- Set of fire extinguishers
- Adaptation to the MCA regulations for category 2

---

## **MOORING & TOOLS**

- Windlass 3000 W 24V (Quick)
- Anchor 60 kg FOB + 130 m galvanised chain(diameter 13mm) 130m łańcucha
- Additional anchor 20kg + 20m galvanised chain(diameter 10mm)

---

## COMFORT ON BOARD

- Electrically recessed Skyscreen blinds in the saloon and owners cabin(manual in the guestcabins)
- Manually concealed Skyscreen with anti-mosquito screens on cabin ceiling hatches
- Stainless steel sliding door instead of aluminium(upgrade)
- Fitted forepeakwith bed, toilet, shower and sink
- Fitted forepeak with bed, toilet, shower and sink
- Air conditioning installation in the saloon, galley and cabins: 120000 BTU (Webasto)
- Washing machine /dryer with complete installation–separate unit
- Kitchen appliances package (Siemens & Gorenje)
- Refrigerator for drinks in the cockpit
- Ice maker
- Wine cooler
- Widescreen LCD TV in the saloon(40")
- Hi-Fi Pack (white speakers) (home-theater system in the saloon: Denon with Dali speakers)
- Satellite TV antenna
- Full-size back cushions on the seat behind cockpit table
- Full-size back cushions on the flybridge

---

## FINISHING

- Furniture and all interior panels made of individually selected wood of category A with polyurethanevarnish
- All upholstery and cushions made of synthetic fabric
- Hull, deck and flybridge in white gelcoat
- Front saloon windows finished with black hatch frames and dark plexi panel
- Side of hulls painted in colored gelcoat light colors (grey RAL 7004)
- Deck and superstructure grey RAL 7015
- Cockpit, flybridge and skirts covered with teak
- Deck covered with teak andinstalled flush hatches





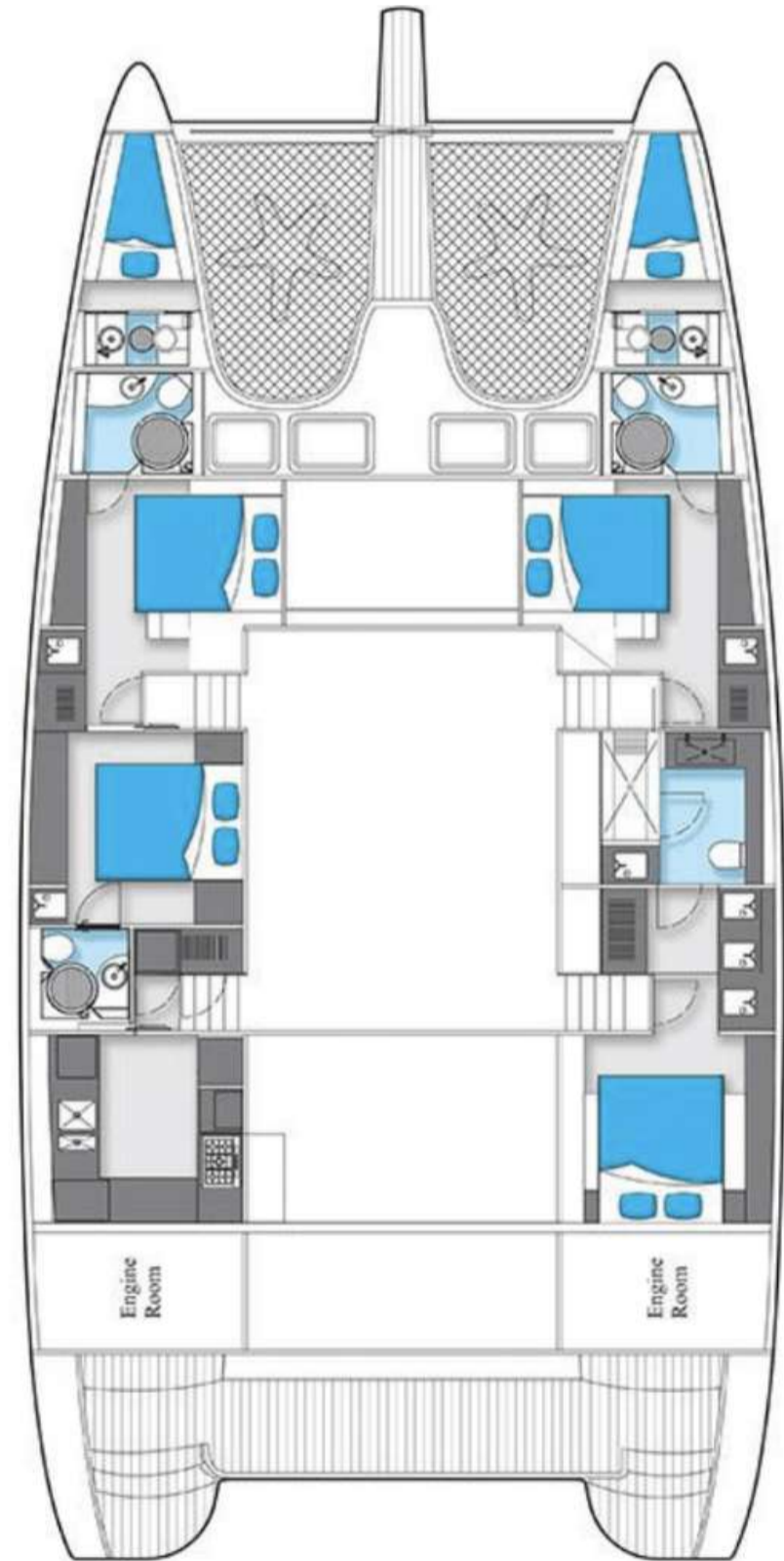
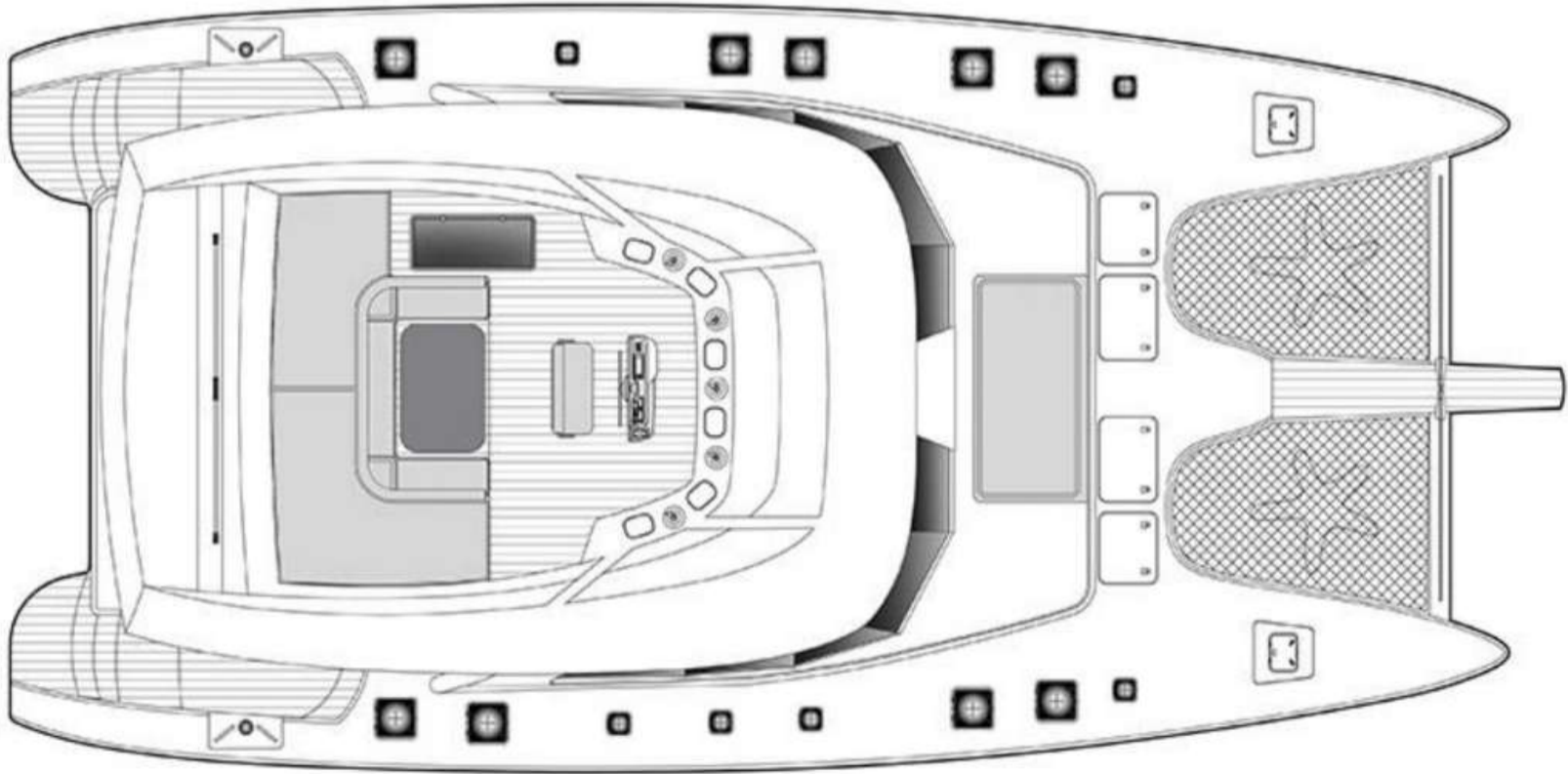
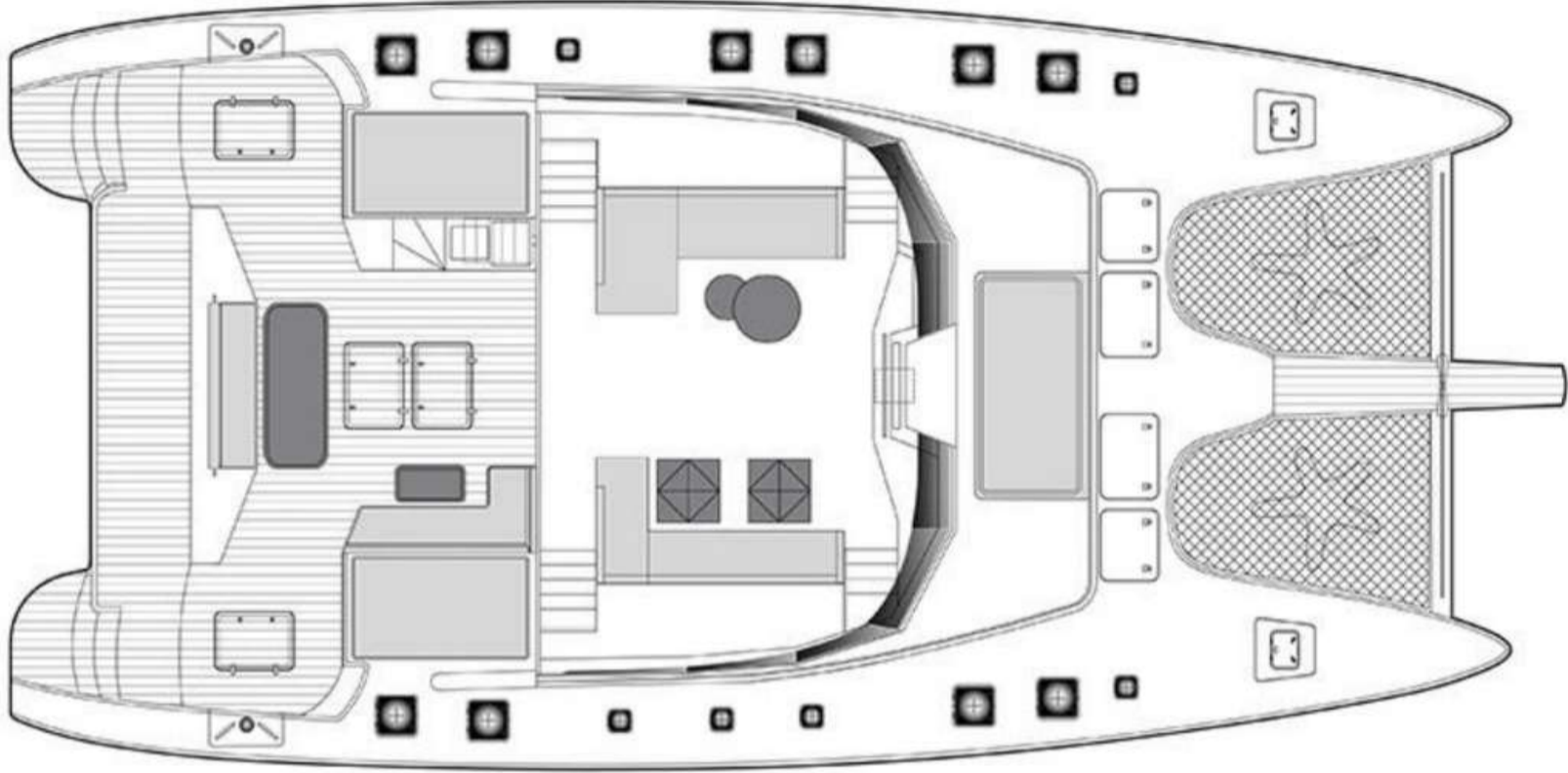


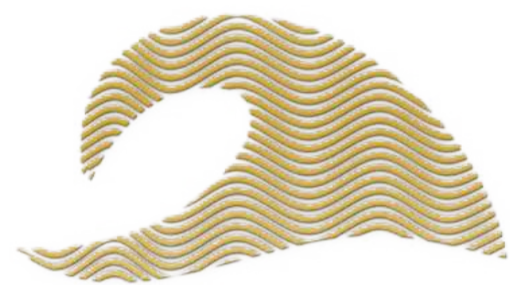




An aerial photograph of a white catamaran sailboat on a body of blue water. The boat has two hulls, a central cabin, and a mast with rigging. A semi-transparent white banner is overlaid across the middle of the image, containing the word "LAYOUTS" in large, bold, black capital letters.

# LAYOUTS





Swell Yachting

**Golan Levi**

**[golan@swellyachting.com](mailto:golan@swellyachting.com)**

**T: +442081441113 T: +972543000933**

**[www.swellyachting.com](http://www.swellyachting.com)**