

SUNREEF 62 SAIL

*ADEA*



62 Sunreef  
CUSTOM









# SUNREEF 62 SAIL ADEA

## General Information:

Builder: Sunreef Yachts

Year: 2017

REGISTRATION: UK

Material: GRP

Category A: 12 passengers

Length overall: 18.9 m / 62.00 Ft

Breadth overall: 9.27 m / 30.40 Ft

Lightship displacement : 27T

Draft minimum: 1.65 m / 5.40 Ft

Mast length: 24.99 m / 82.00 Ft

Main engines: Yanmar 2 x 110 HP

Fuel capacity: 2 x 900 l

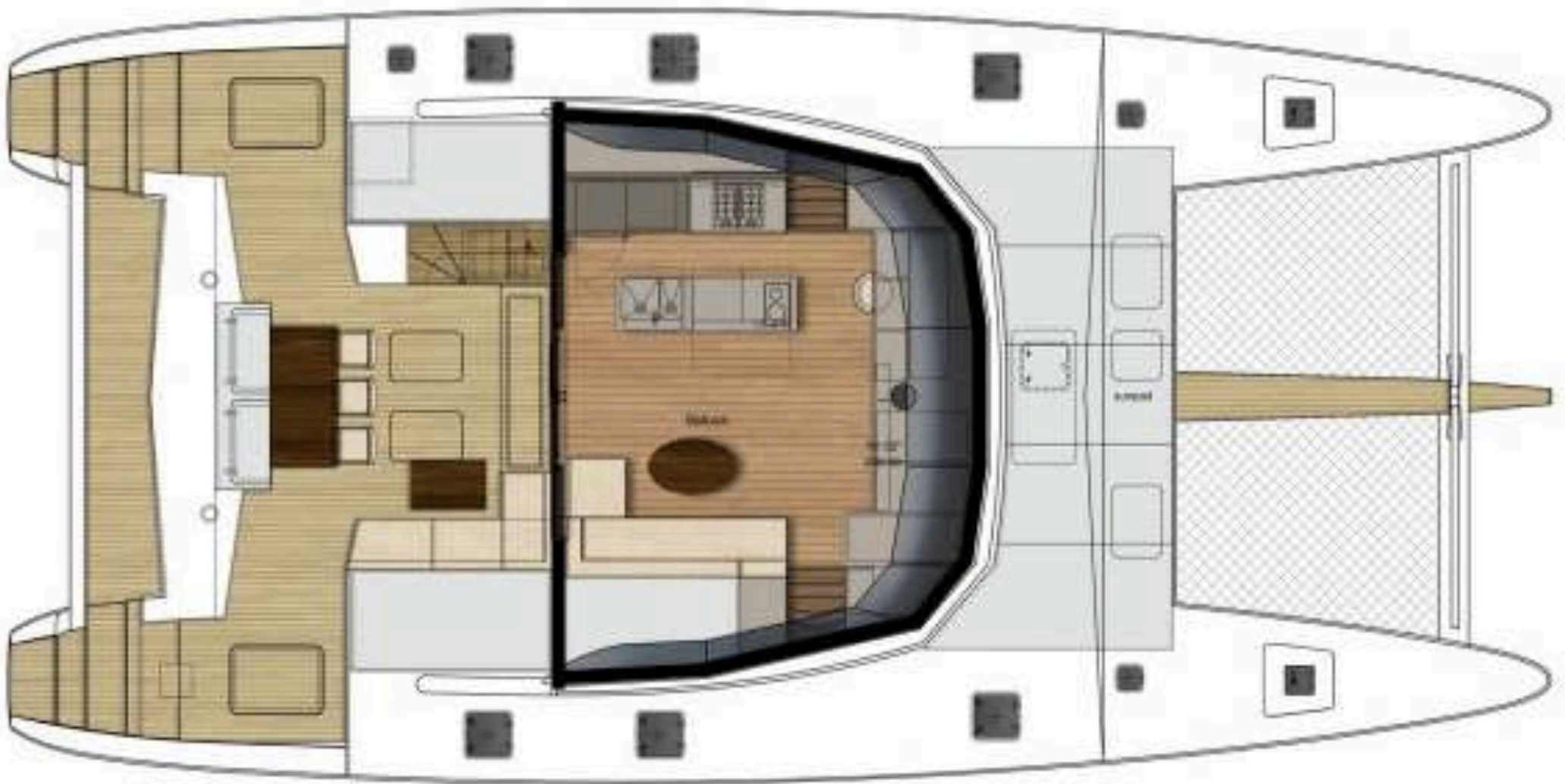


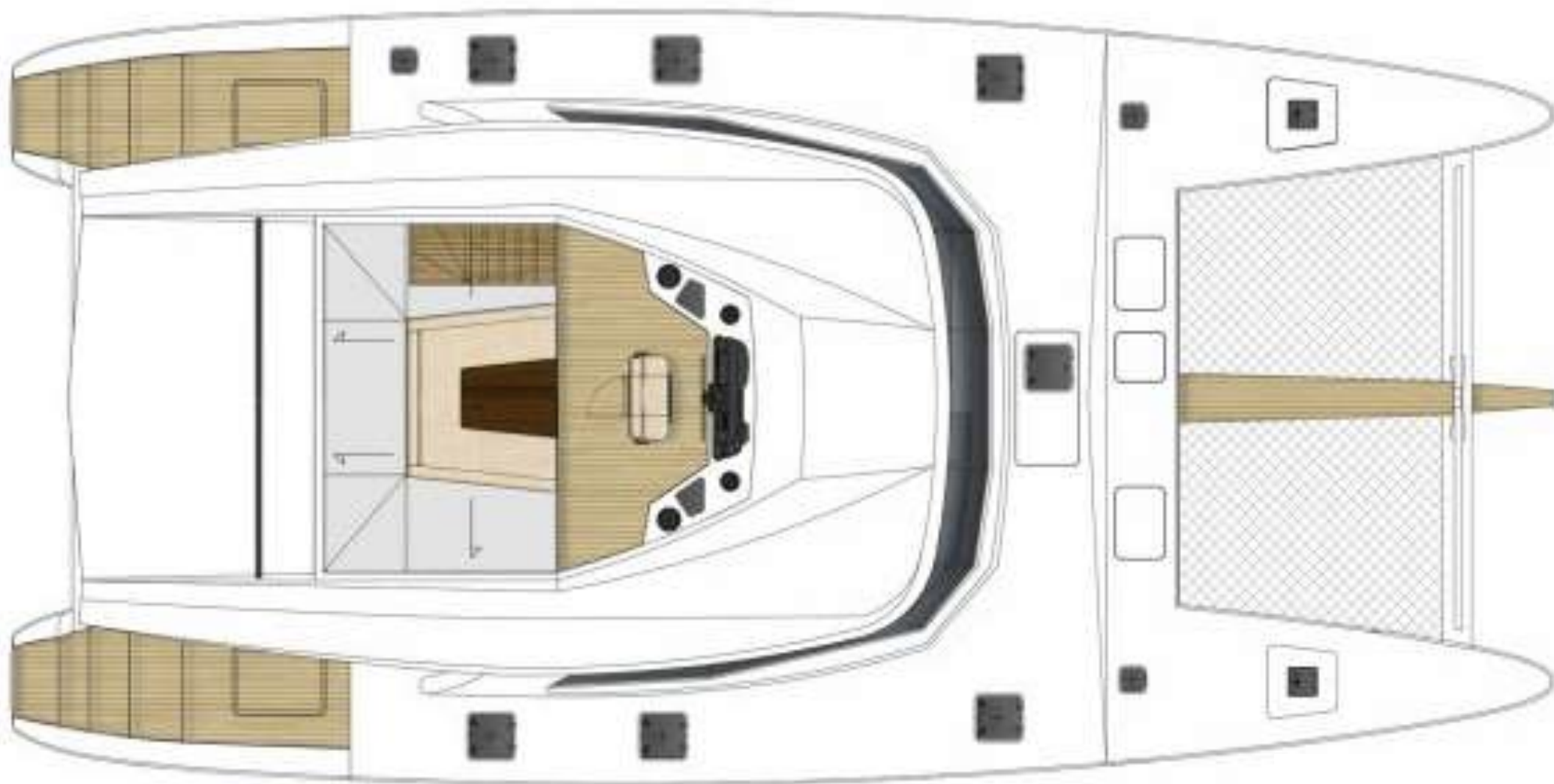
A 2017 launch, luxury sailing catamaran ADEA constitutes a remarkable combination of utter elegance and style with outstanding seaworthiness and a remarkable level of stability which makes her a top-of-her-class within a 60-footer range.

DEA features a contemporary interior design, dominated by a sophisticated palette of white and grey leather upholstery, and a charter-friendly layout, with accommodation provided for up to 8 guests in 4 beautifully appointed cabins. Four elegant en suite cabins are located in the hulls, with a large master cabin quipped with a hammam sauna and a guest cabin placed in the starboard hull and the remaining two guest cabins located in the portside hull.









Swell Yachting



## CONSTRUCTION

- Hulls, deck, flybridge and all structural bulkheads constructed of glass/vynilester and polyester sandwich laminate
- Rudders constructed of a moulded sandwich glass/vynilester. Rudders stocks in aluminium alloy
- Aft platform
- Extended reinforced longitudinal beam
- Electric lifting system for the dinghy with extendable arms and remote controller

## MECHANICS

- 2 Engines 125 HP (Yanmar)
- Pair of 3 bladed folding propellers for 110 HP engines (needs option 3.2)
- Consumption estimation system
- 2 electric bow thrusters
- Extension of fuel tanks to 2 x 900L
- Two extra engine instruments at the navigation table

## NAVIGATION & ELECTRONICS

- Compass (size 135mm)
- Chronometer and barometer
- B&G: 2pcs MFDs 16", radar 4G, autopilot, AIS, depth, speed & temp sensor, GPS, VHF with DSC function (dual station, built in AIS receiver, Hailer/Horn Loudspeaker, Intercom function), searchlight + control unit
- Satellite TV Antenna KVH TV6
- 4G/LTE Wifi antenna

## RIGGING / DECK GEAR

- Carbon mast with incorporated LEDs and carbon boom
- Fully battened mainsail Dacron 1st choice, cross cut, 2 reefs
- Genoa double pleated 1st choice Dacron
- Solent 1st choice double pleated Dacron
- Gennaker polyester
- Complete gear for Solent
- Complete gear for Gennaker
- Bow pulpits with integrated teak seats
- Manual gangway
- Port lights
- 1 swim ladder on the skirts
- 4 manual winches
- Blocks and jammers
- Genoa manual furler
- Deck light
- Hatch at the top of the stairway between cockpit and flybridge
- Composite bimini on the flybridge
- Bimini windshield
- Cockpit windshield with antimosquito net
- Tent for the front part
- Upgrade of 3 manual winches by 3 electric winches
- Upgrade of manual main sail winch by electric winch
- Hydraulic gangway
- Cover kit (Steering wheel, Nav station, Fly table)



## COMFORT ON BOARD

- Galley appliances package (dishwasher, cooker hood, electric oven, electric stove, stainless steel microwave)
- Refrigerator / freezer 221 L (220V) in the galley
- Manually concealed skyscreen on cabin ceiling hatches
- Electrically recessed blinds in the saloon, master cabin and navigation station (manual in the cabins)
- Air conditioning 62 000 BTU/h

### Leisure items:

- Widescreen LED TV 55" with installation (saloon)
- Ipad Pro 12.9" with docking stations instead of optional LED TV 32" (4 cabins)
- Lifting system up/down (if possible depend on layout)
- Digital Cloud (wifi network for film and TV)
- Saloon Hi-Fi Pack upgrade to Sonos instead of standard Bose Lifestyle 525
- Cabins Hi-Fi Pack upgrade to Sonos Play3 instead of Bose Cinemate 520 (4 cabins)
- 2 waterproof speakers in the cockpit and 2 in the flybridge
- Electric diving compressor 6m<sup>3</sup>/ hour
- Ice maker
- Refrigerator for drinks in the cockpit
- Safe (price per unit)
- Washing machine/dryer with complete installation
- Flybridge cushions set + flybridge mattress
- Cockpit mattress
- Stainless Steel BBQ

## PLUMBING

- Fresh water: 1 x 800 L equipped with level indicators, 1 pressurized pump, 2 water heaters of 80 L each
- Black water: 1 x 170 L each tank with discharge system, 1 electric pump with automatic discharge equipped with 3 way valves (discharge in the sea or holding tanks)
- 4 electrical bilge pumps
- 2 manual bilge pumps
- Hand shower on deck
- 1 pressurized fresh water outlet on cockpit (female quick-coupling snap connector)
- Electric toilets 24V in bathrooms with fresh water flush
- Watermaker 220 l/h – 220V
- Upgrade of blackwater tanks to 2 x 220 L tank
- Sea water pump for washing the deck
- Fresh water inlet (connection between the boat's water network and the shore water supply)
- Fresh water outlet for washing the deck
- Retractable hose (5mb) with shower head in chain locker for chain wash
- Shower head on the cockpit ceiling with mixing valve





## ELECTRICAL SYSTEMS

- AC-230V 50Hz 1PH: main switchboard with panel extension (manual change over shore-generators), 2 chargers (24V/100A), inverter (220V/50Hz/5000W), 2 x Shore Power inlet 63A, 3 x socket 230 V in cabins, 4 in saloon, 4 in dining area and 4 in galley
- DC-24V: Main switchboard, house batteries (24V/600Ah), 2 starting batteries, DC distribution, wiring
- Batteries upgrade to 1000Ah
- Additional charger Skylla 24V/100A
- Additional inverter 230/50Hz/5000W
- 13 x USB charging points
- 2 alternators 24V, 75A each
- Generator 19 KVA, 50Hz, 230V
- Dinghy electric launching system with remote controller

## LIGHTS

- Interior lighting with LED lamps
- Navigation lights with LED lamps
- Lights in the engine rooms
- Domotic system for lights, controls, and D/C system, including dimmers for ceiling lights (Domotic system function). Control of:
  - Lighting with dimming
  - Navigation lights
  - Control of valves and pumps of black water
- Measurement:
  - Tank level monitoring with alarm: fresh water, black water, fuel
  - Battery and Victron charger monitoring with alarm: starter/ main batteries bank/ emergency batteries
  - Measurement of temperature in the engine room
- Underwater lights LED (monocolor)
- Exterior lighting (LEDs, deck search light)

## SAFETY EQUIPMENT

Adaptation to commercial requirements MCA cat 2 (Red Ensign)  
Complete rescue equipment with life-rafts for 12 persons

## MOORING & TOOLS

- Windlass REGAL 2300 x 24V
- Galvanized anchor CQR 66kg
- 80m chain (diameter 13mm DIN)
- Additional anchor 20kg + 20m galvanized chain (diameter 10mm)
- 50 m tow line
- Mooring kit (8 fenders + 4 mooring ropes)
- Shroud cutter

## STEERING SYSTEM

- Rudders constructed of a moulded sandwich lamination glass/ vinyl ester
- Self-aligning lower and top bearings
- 5-spoke steering wheel (diameter 1000 mm)
- Hydraulic steering system
- 2 emergency tillers
- Rope cutters on the propeller shafts



## INTERIOR

- Furniture and all interior panels made of individually selected upgraded wood of category A with polyurethane varnish
- Owner's cabin: 1 storage with shelves, 1 storage with hangers, 2 night tables, bed 160x220
- 2 guest cabins: 1 storage with shelves, 1 storage with hangers, 2 night tables, bed 160x220
- Crew cabin: 1 storage with shelves, 1 storage with hangers, 1 night table, bunk bed
- Saloon: dinning table, sofa , coffee table, chair under navigation console
- Movable furniture: 6 saloon dining chairs, 3 cockpit dining chairs, cockpit dining table and coffee table
- Bathroom equipment (per bathroom): 1 towel rail, 2 hangers, 1 toilet brush, toilet paper holder
- Teak in saloon
- Saloon upholstery in leather
- Cockpit and skirts floor covered with teak
- Deck covered with teak and installed flush hatches
- Flybridge covered with teak
- Teak toe rails along deck sides
- Superstructure in colored gelcoat (light grey)
- Fitted forepeak (bed + bathroom) with composite painted wall
- Air condition for forepeak (need air condition installation)
- Stainless steel sliding door

## EXTRA'S

- tender ZAR 43 with full equipment + cover
- Additional bilge pump in the forepeak
- Additional mooring ropes and 4 fenders – inflatable
- Cloud & wifi solution with hard drive 12TB (drive enlargement)
- Ipad Air 2 for weather condition display system on the navigation station
- 5 x Headsets – Bose 35
- Satellite phone Iridium 9555
- GOST Tracking system
- Alarm system including 6 camera's and hatch, door interruption detectors
- Fish Finder
- 8 x Additional point LED lights
- Pop-up sockets in kitchen
- Special socket 230V for work table in the engine room
- Double socket in the master bathroom
- Bruce anchor – 40 kg instead of 20kg galvanised
- Fuel transfer pump
- Extra generator noise reduction option – noise reduction for the whole engine room
- Name ADEA on main sail
- Sparkling water system
- Bed base storage lights
- Navigation seat with high back support
- Bathroom with hammam option (max. temp 55C)
- Additional crew quarters in fore peak





## EXTRA'S

- washing machine and extra freezer inside fore peak storage
- MIELE kitchen equipment upgrade
- Printer and scanner
- Additional 40m of chain 13 mm galvanized
- Nintendo Switch
- Playstation 4 with installation
- Additional fresh water outlet for washing the deck
- Additional swim ladder
- Windlass upgrade to 3000W
- Solar panels installation (flybridge and bimini)
- Wakeboard fixing system
- Micro Whiz ventilation
- Additional Hatch
- LED logo ADEA
- Additional Logo ADEA stainless steel
- Chain counter installation + remote controller + 2 Quick controllers with displays
- Teak tray – cockpit
- Additional stainless steel protectors on both hulls
- Additional corian shelves in all bathrooms
- Corian countertop upgrade in guest bathrooms
- Two additional LED lights on the cockpit steps
- Fresh water pump running alarm diod on the nav station
- Additional hatches in saloon plexiglass windows
- Fishing rods holder
- Salon blinds fabric upgrade
- Cockpit countertop upgrade to corian
- Additional covers for the captains seat



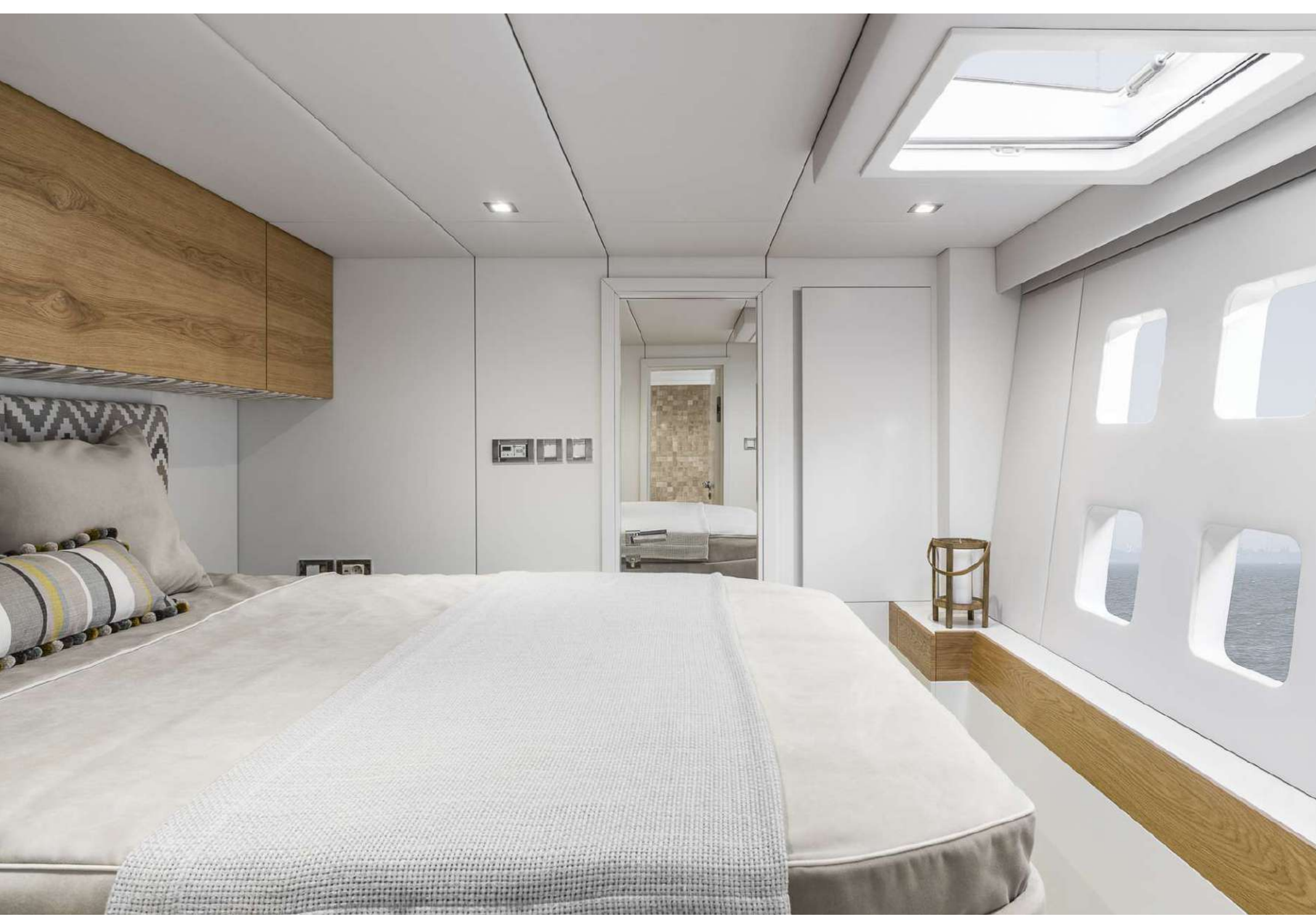


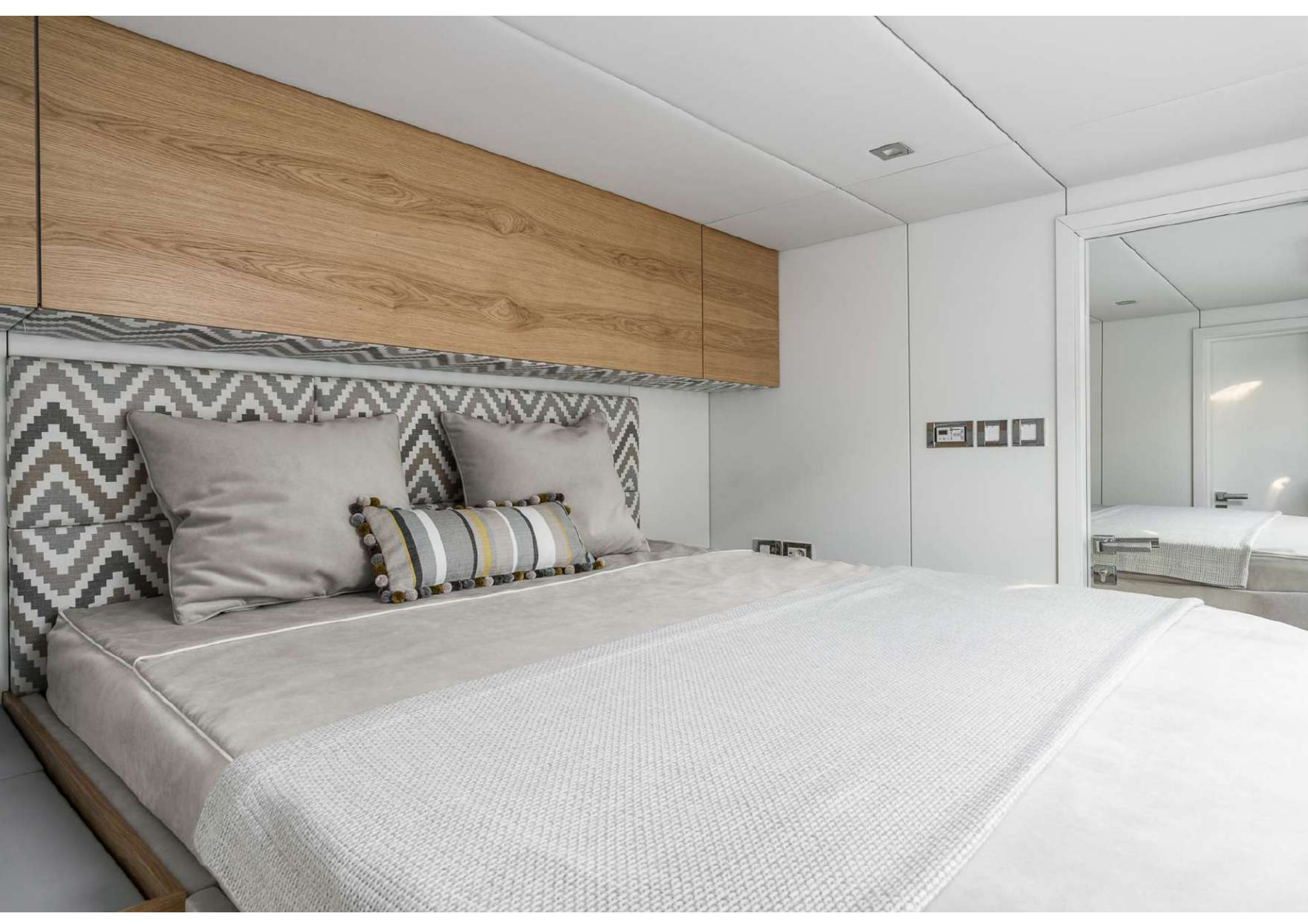




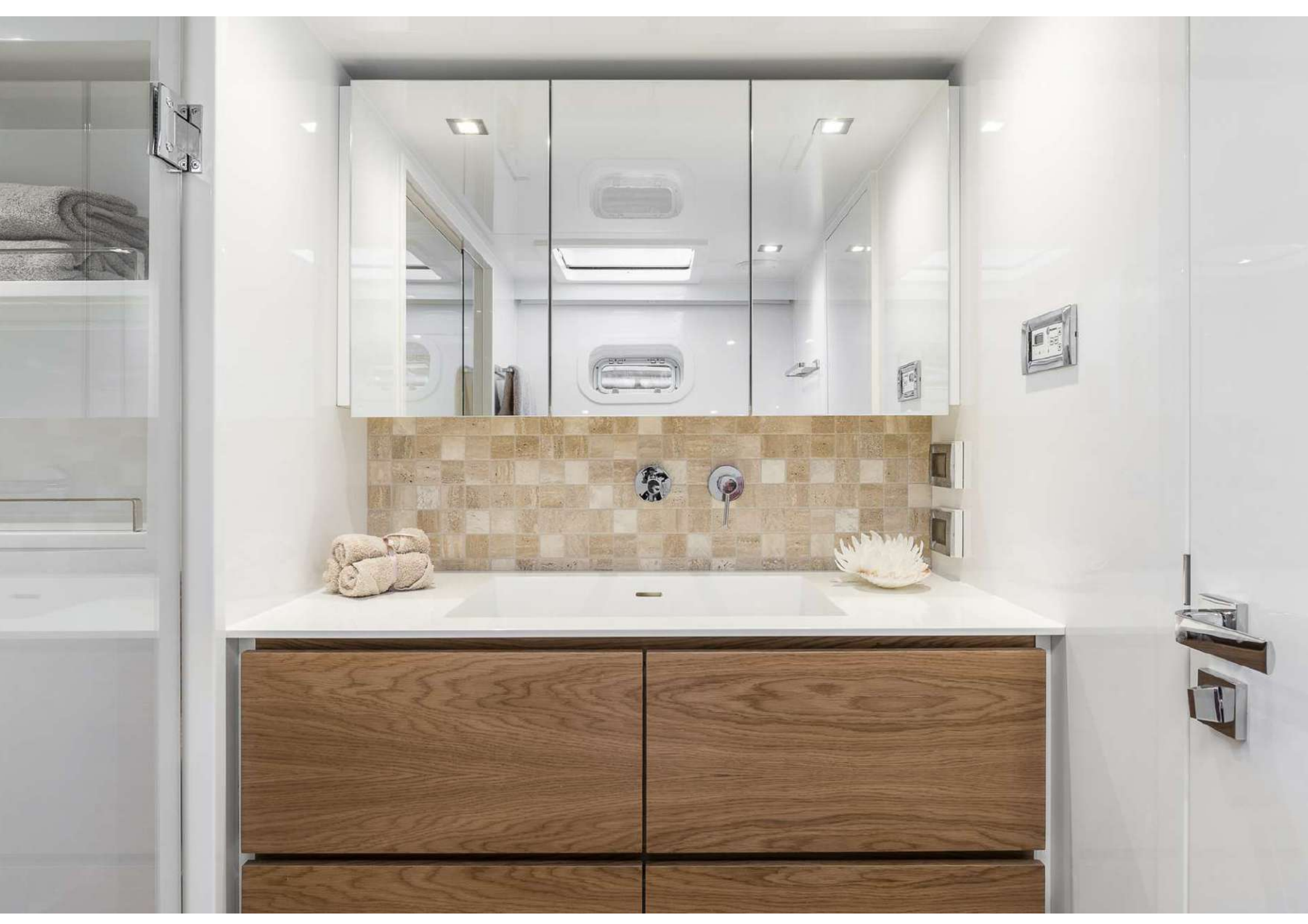










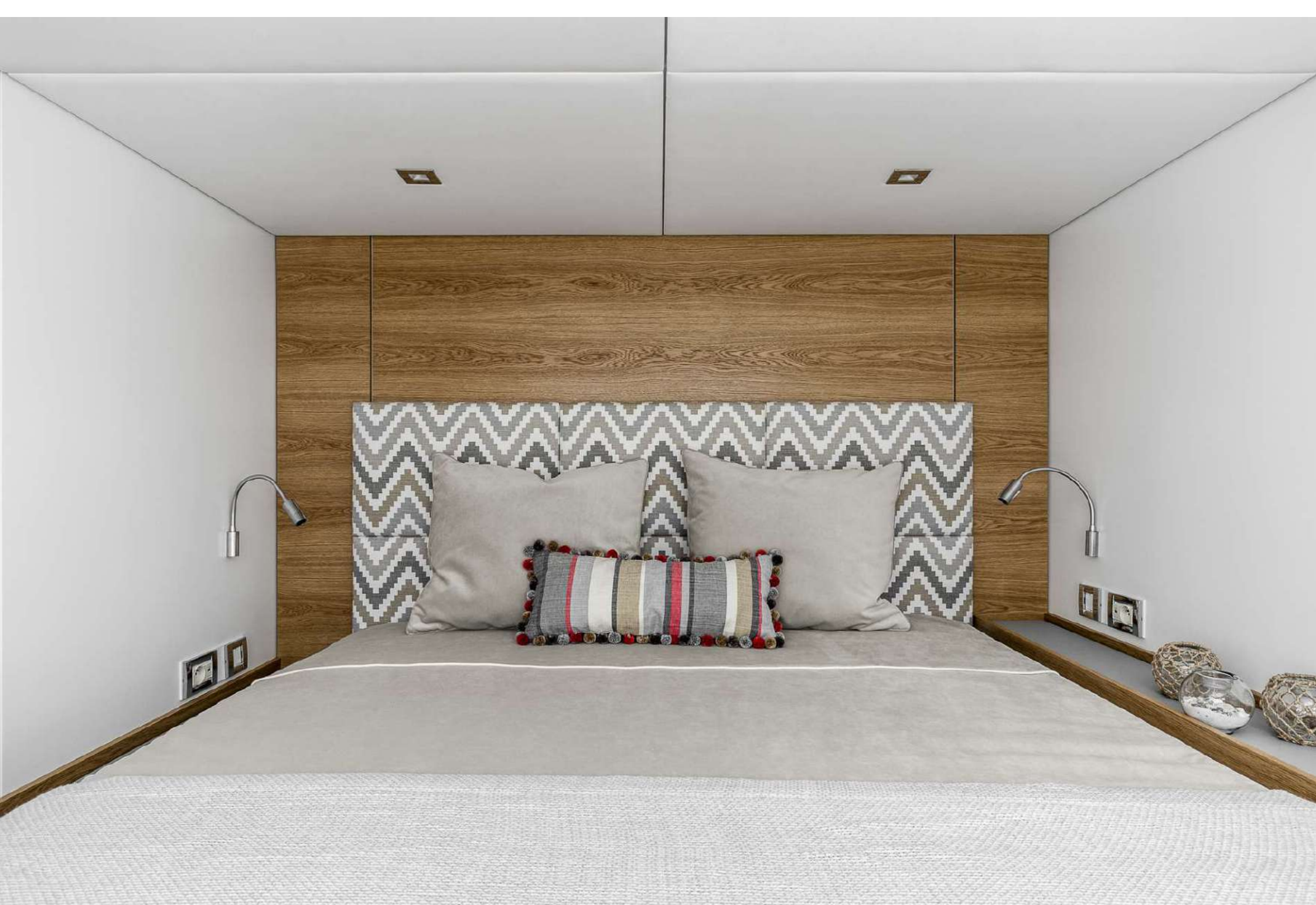




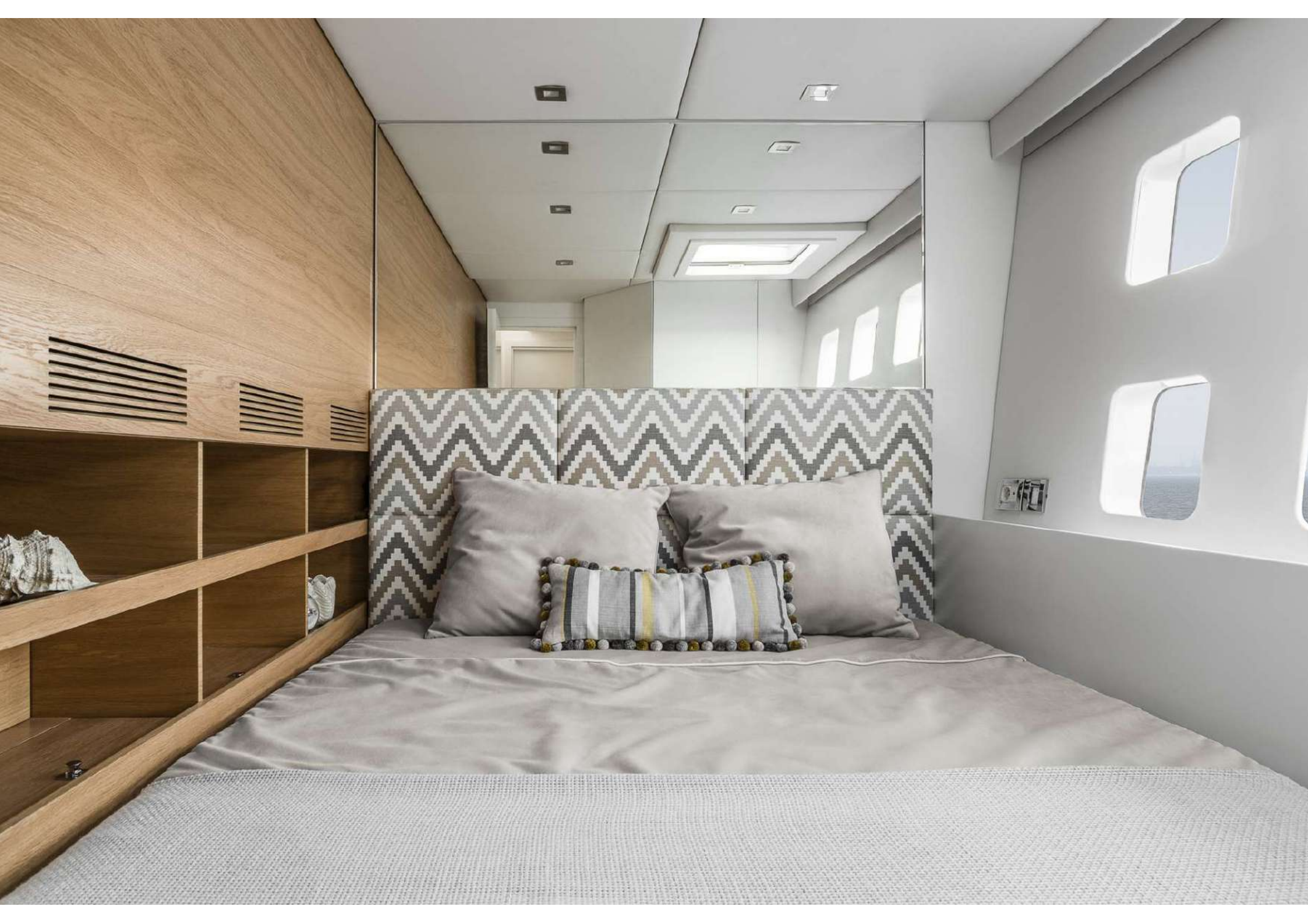












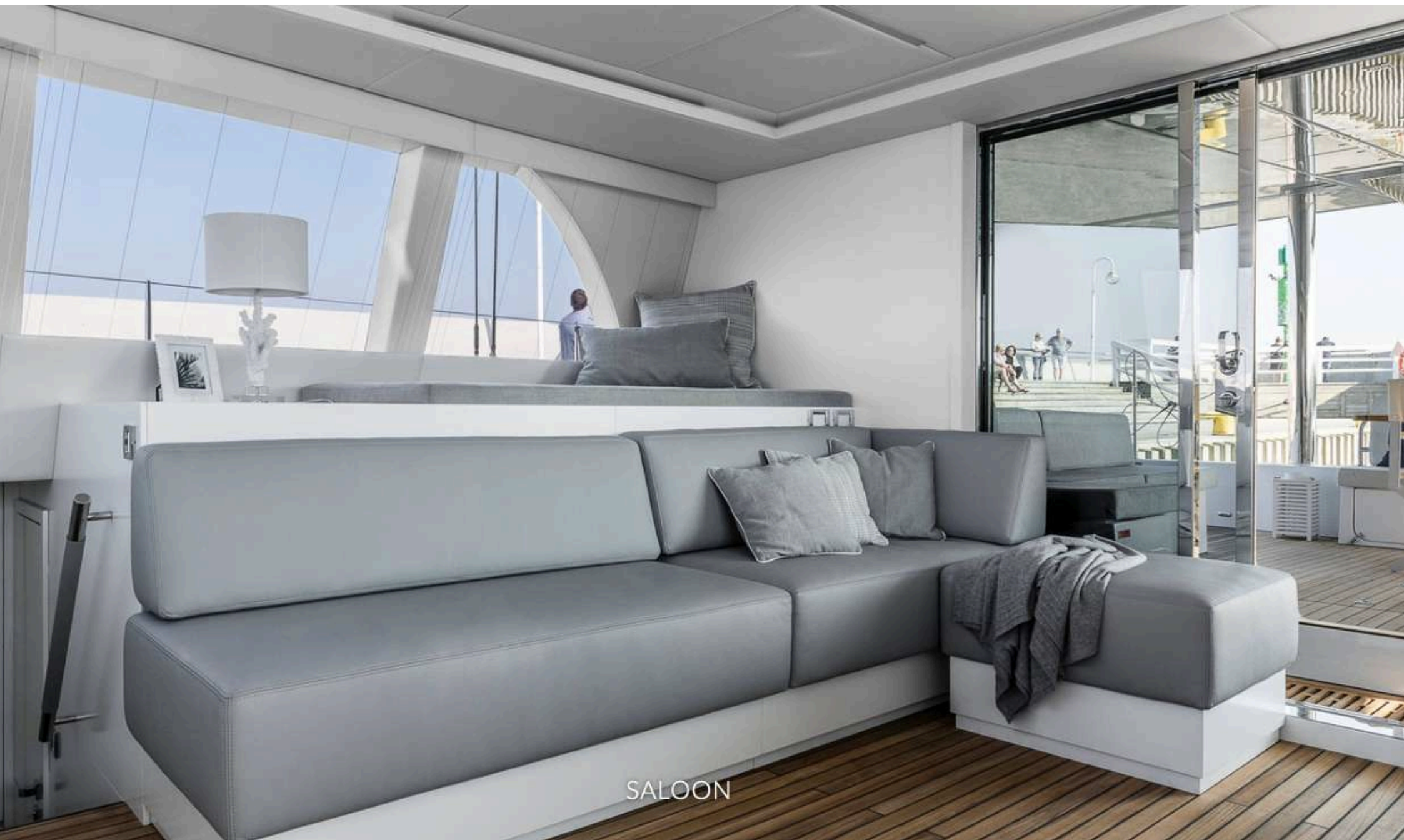




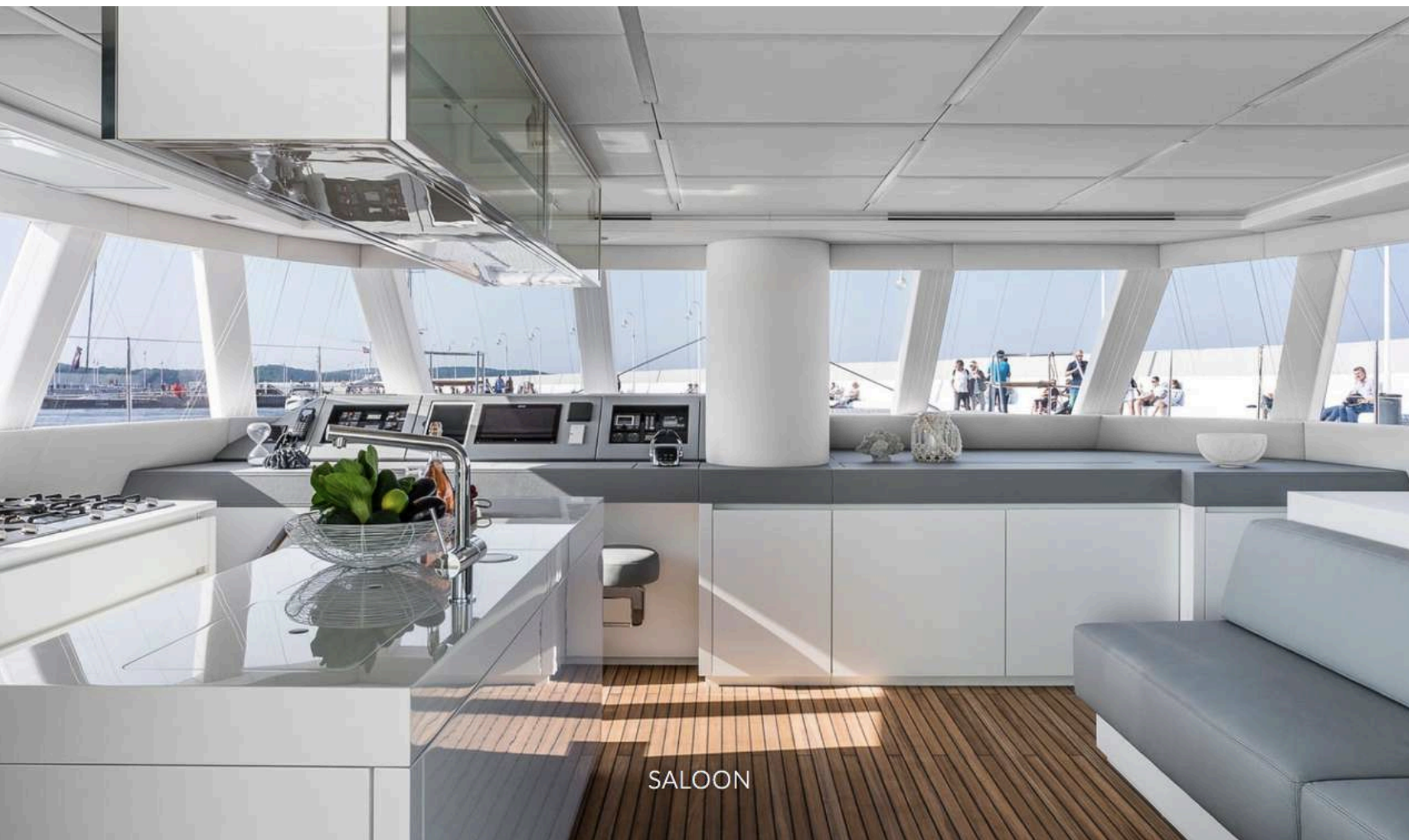








SALOON



SALOON





[www.swellyachting.com](http://www.swellyachting.com)

Golan Levi  
[golan@swellyachting.com](mailto:golan@swellyachting.com)  
T: +442081441113  
T: +972543000933

Anna Nowotarska  
[anna@swellyachting.com](mailto:anna@swellyachting.com)  
+48514222349